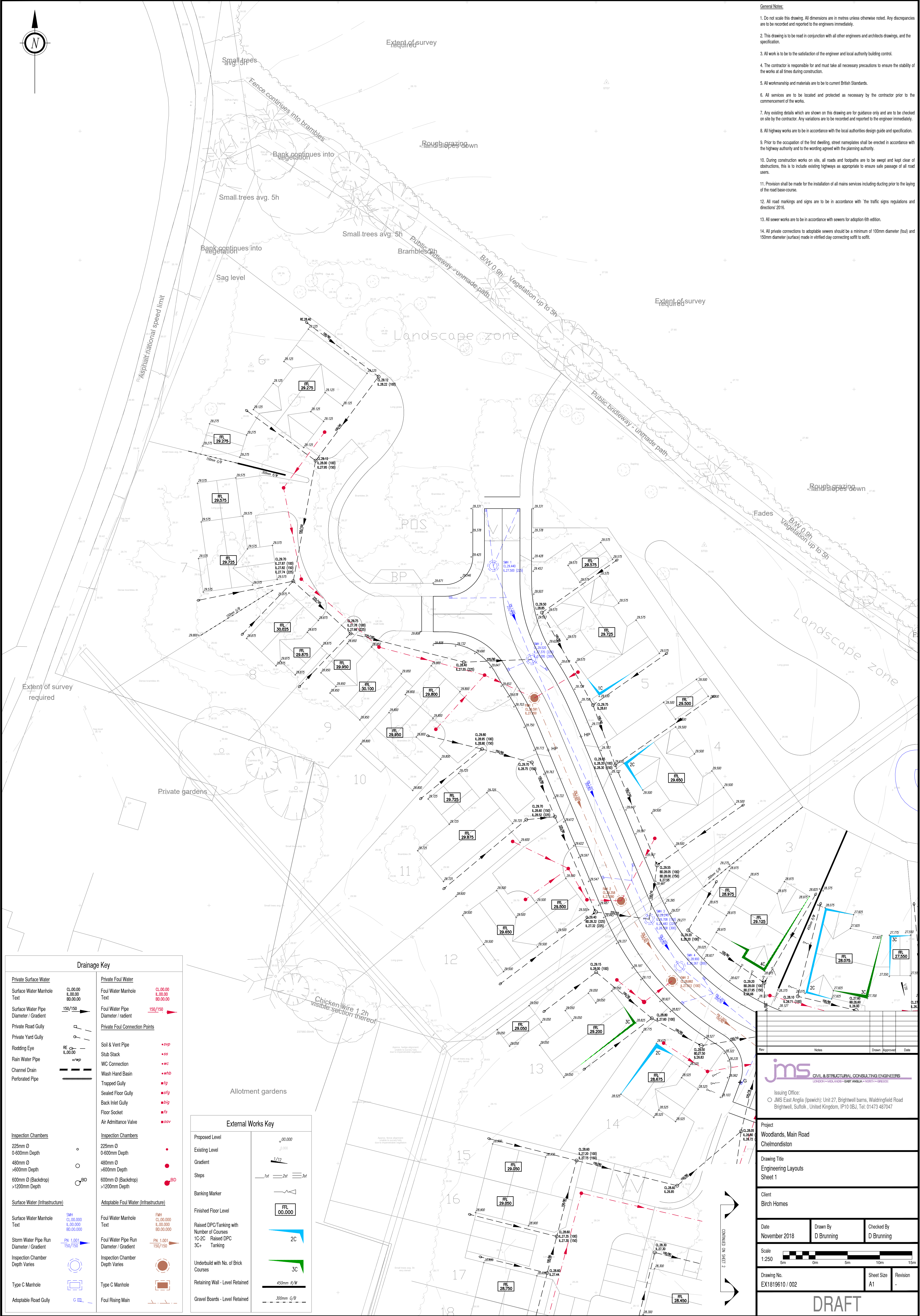


General Notes:

1. Do not scale this drawing. All dimensions are in metres unless otherwise noted. Any discrepancies are to be recorded and reported to the engineers immediately.
2. This drawing is to be read in conjunction with all other engineers and architects drawings, and the specification.
3. All work is to be to the satisfaction of the engineer and local authority building control.
4. The contractor is responsible for and must take all necessary precautions to ensure the stability of the works at all times during construction.
5. All workmanship and materials are to be to current British Standards.
6. All services are to be located and protected as necessary by the contractor prior to the commencement of the works.
7. Any existing details which are shown on this drawing are for guidance only and are to be checked on site by the contractor. Any variations are to be recorded and reported to the engineer immediately.
8. All highway works are to be in accordance with the local authorities design guide and specification.
9. Prior to the occupation of the first dwelling, street nameplates shall be erected in accordance with the highway authority and to the wording agreed with the planning authority.
10. During construction works on site, all roads and footpaths are to be swept and kept clear of obstructions, this is to include existing highways as appropriate to ensure safe passage of all road users.
11. Provision shall be made for the installation of all mains services including ducting prior to the laying of the road base-course.
12. All road markings and signs are to be in accordance with 'the traffic signs regulations and directions' 2016.
13. All sewer works are to be in accordance with sewers for adoption 6th edition.
14. All private connections to adoptable sewers should be a minimum of 100mm diameter (low) and 150mm diameter (surface) made in vitrified clay connecting soft to soft.



Drainage Key	
<b>Private Surface Water</b>	<b>Private Foul Water</b>
Surface Water Manhole Text	Foul Water Manhole Text
Surface Water Pipe Diameter / Gradient	Foul Water Pipe Diameter / Gradient
Private Road Gully	Private Foul Connection Points
Private Yard Gully	Soil & Vent Pipe
Rodding Eye	Stub Stack
Rain Water Pipe	WC Connection
Channel Drain	Wash Hand Basin
Perforated Pipe	Trapped Gully
	Sealed Floor Gully
	Back Inlet Gully
	Floor Socket
	Air Admittance Valve
<b>Inspection Chambers</b>	<b>Inspection Chambers</b>
225mm Ø 0-600mm Depth	225mm Ø 0-600mm Depth
480mm Ø >600mm Depth	480mm Ø >600mm Depth
600mm Ø (Backdrop) >1200mm Depth	600mm Ø (Backdrop) >1200mm Depth
<b>Surface Water (Infrastructure)</b>	<b>Adoptable Foul Water (Infrastructure)</b>
Surface Water Manhole Text	Foul Water Manhole Text
Storm Water Pipe Run Diameter / Gradient	Foul Water Pipe Run Diameter / Gradient
Inspection Chamber Depth Varies	Inspection Chamber Depth Varies
Type C Manhole	Type C Manhole
Adoptable Road Gully	Foul Rising Main

External Works Key	
Proposed Level	0.00.000
Existing Level	0.00.000
Gradient	1/12
Steps	1st 2nd 3rd
Banking Marker	
Finished Floor Level	FL 00.000
Raised DPC/Tanking with Number of Courses	2C
Underbuild with No. of Brick Courses	3C
Retaining Wall - Level Retained	450mm R/W
Gravel Boards - Level Retained	300mm G/B

**jms** CIVIL & STRUCTURAL CONSULTING ENGINEERS  
 Issuing Office:  
 JMS East Anglia (Ipswich): Unit 27, Brightwell barns, Waldringfield Road  
 Brightwell, Suffolk, United Kingdom, IP10 0BJ, Tel: 01473 487047

Project  
 Woodlands, Main Road  
 Chelmondiston

Drawing Title  
 Engineering Layouts  
 Sheet 1

Client  
 Birch Homes

Date  
 November 2018

Scale  
 1:250

Drawing No.  
 EX1819610 / 002

**DRAFT**

Rev	Notes	Drawn	Approved	Date

Drawn By  
 D Brunning

Checked By  
 D Brunning

Sheet Size  
 A1

Revision  
 .